



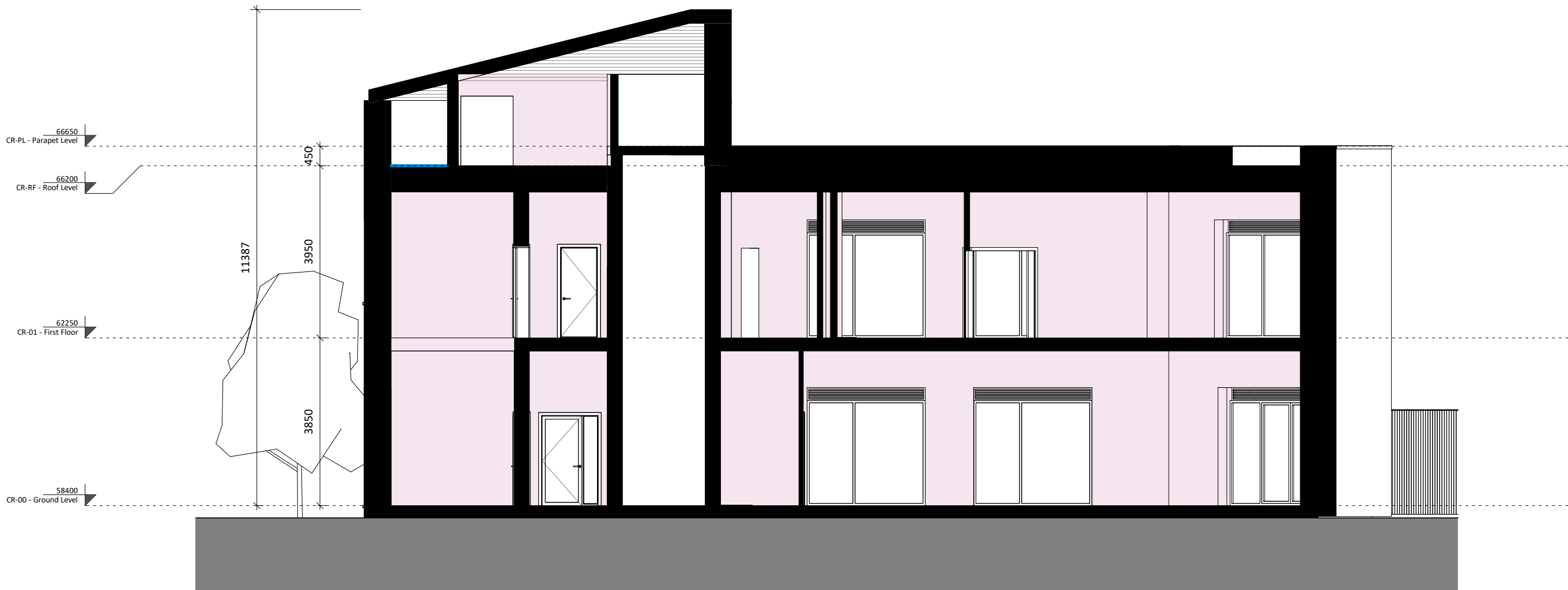
① Creche - North Elevation
1:100



⑤ Creche - South East Elevation
1:100



② Creche - West Elevation
1:100



④ Creche Section A-A
1:100

Site 3 Creche Elevations and Section

- Materials Legend**
(Finishes to Architects' later selection)
1. Brick - Buff Tone
 2. Self-coloured Render - Ivory Tone
 3. Brick - Warm Brown Tone
 4. Brick - Smoked Red Tone
 5. Self-coloured Render - Warm Grey Tone
 6. Engineered Brick - Grey Tone
 7. Clay Brick - White Tone
 8. Self-coloured Render - Off-White Tone
 9. Zinc Metal Finish
 10. Galvanised + Powder-Coated Metal - Grey

Revision Description	Date	Rev. No.	Issued by
Issued For Planning	28.03.2025	A3-C01	CM
Any reference to fire safety design or performance is presented for coordination purposes only. Refer only to the granted Fire Safety Certificate, and fire consultant's information for fire safety design, specification and performance.			
Figured dimensions only to be used. This drawing is copyright of O'Mahony Pike Architects Ltd. All information is shared as per approved use in accordance with ISO19650-2:2018, Table 5; Standard Codes for Suitability of Models and Documents and the BEP. If the 'Status' field is empty, this information has been shared at S0 - WIP.			

<h1>o'mahony pike</h1>			Project Code: KSG3	Scale @ A1: As indicated
<div>architecture urban design</div> <div>email: info@omahonypike.com</div> <div>tel: +353 1 202 7400</div> <div>fax: +353 1 283 0822</div> <div>www.omahonypike.com</div>			Project Lead: DMcD	Date: 28.03.2025
			Drawn By: CM	Revision: A3-C01
			Job No.: KSG3	Status: S2
			Purpose: Planning	
Project:	Kishoge Part 10 Application			
Location:	Clonburris, Co. Dublin			
Client:	South Dublin County Council			
Drawing Title:	Site 3 Creche Elevations and Section			
Drawing No.:	KSG3-OMP-CR-ZZ-DR-A-2000			

Source File: KSG3-OMP-ZZ-22-M3-A-0001.rvt